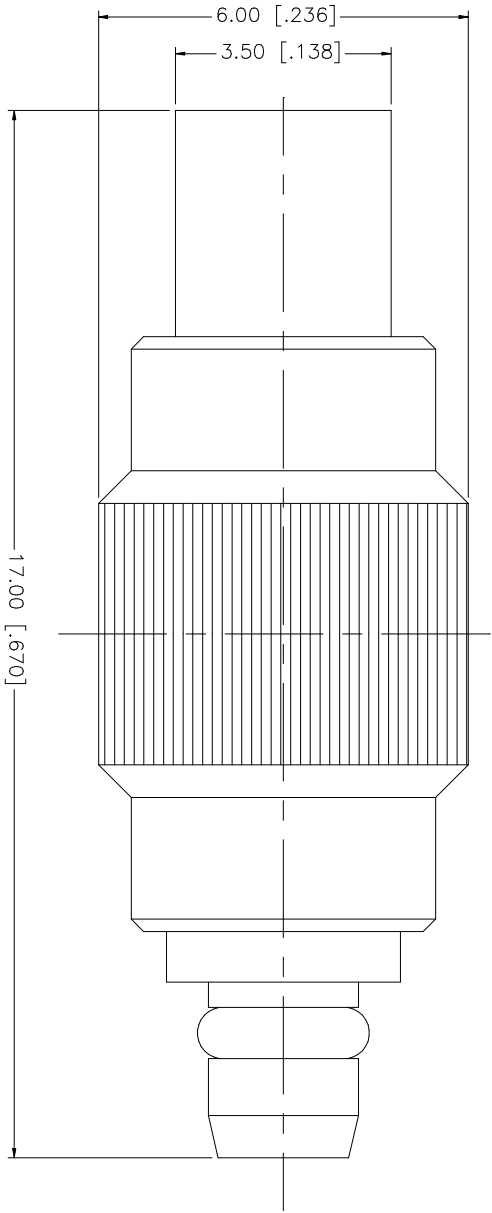


REV.	DATE	DESCRIPTION
NC	01/31/03	INITIAL RELEASE
A	12/20/05	REVISE PART DESCRIPTION



8	DESCRIPTION	MATERIAL	FINISH	QTY	UNLESS OTHERWISE SPECIFIED DIMENSIONS ARE IN MILLIMETERS DIMENSIONS IN [] ARE IN INCHES AND FOR CUSTOMER REFERENCE ONLY.	APPROVALS	DATE	PART DESCRIPTION	
7					UNLESS OTHERWISE SPECIFIED TOLERANCES FOR MILLIMETERS ARE:	DRAWN	12/20/05	Amphenol Connex MMCX PLUG TO JACK ADAPTER	
6					0.5 - 8mm ± 0.20mm	CHECKED			
5					8 - 30mm ± 0.40mm	ISSUED			
4					30 - 120mm ± 0.50mm	SHEET	1 OF 1		
3	CONTACT PIN	BER. COPPER	GOLD	1	UNLESS OTHERWISE SPECIFIED TOLERANCES FOR INCHES ARE:	CAD FILE			
2	INSULATOR	TEFLON	NATURAL	1	.020 - .315 = ± 0.007"	C:/262/262136.DWG			
1	BODY	BRASS	GOLD	1	.315 - 1.180 = ± 0.015"		DWG. NO.		
					1.180 - 4.724 = ± 0.020"		262136.DWG		
					DO NOT SCALE DRAWING		REV. A	SIZE A	SCALE NA