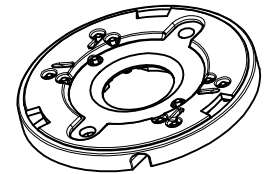
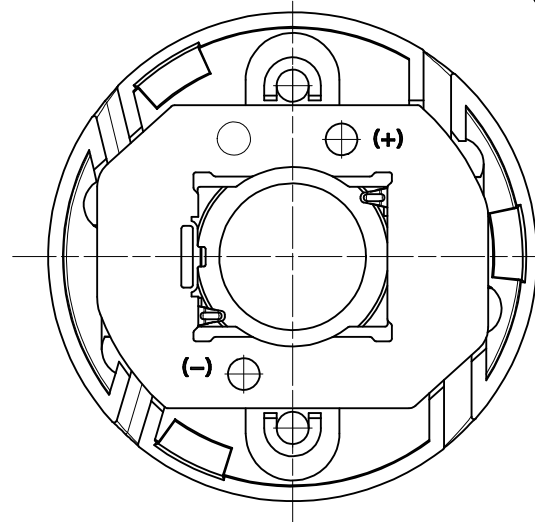
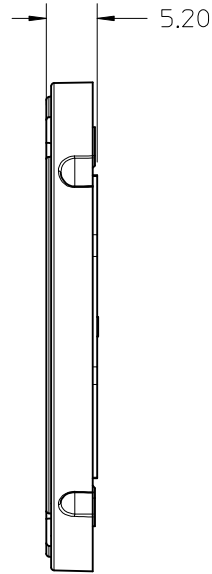
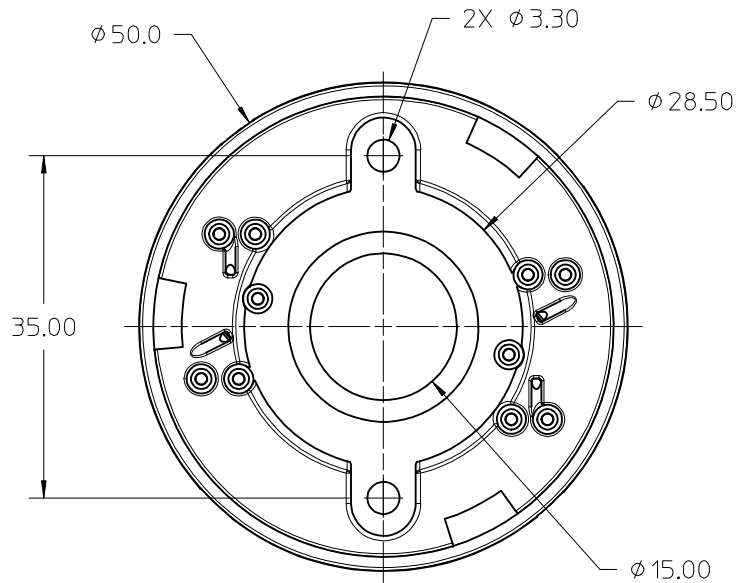


P/N 180580-0004 HOLDER WITHOUT LENS ATTACH FEATURES

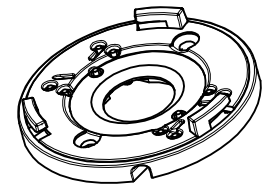


ISO TOP VIEW
SCALE 1:1

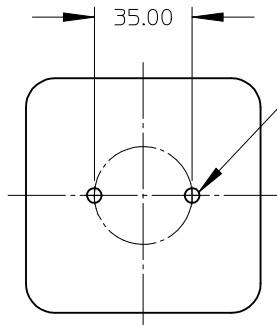
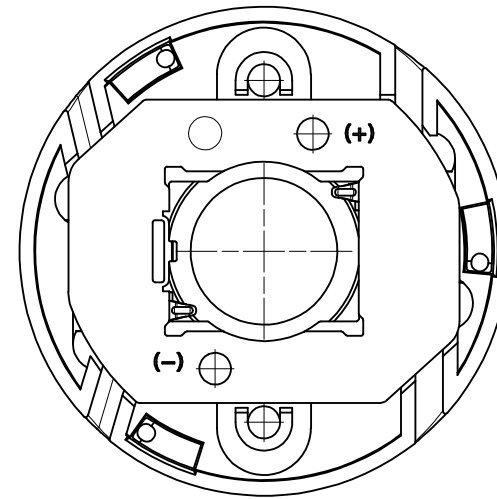
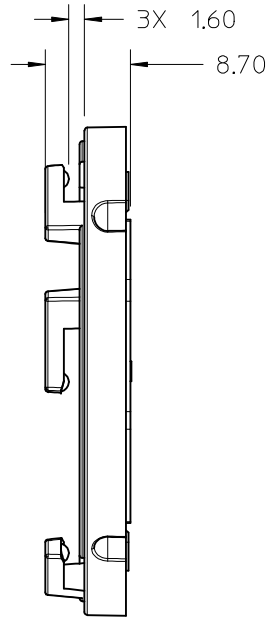
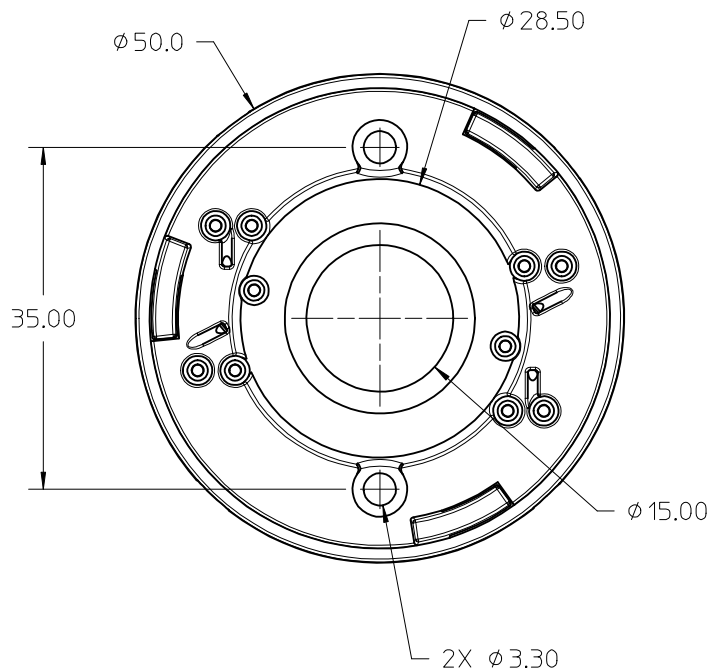
- 1) MATERIALS: COVER: PBT 30% GF, COLOR: WHITE, UL94V-0
HOUSING: PBT 30% GF, COLOR: WHITE, UL94V-0
- 2) WIRE TRAP TERMINALS: COPPER ALLOY
FINISH: LED CONTACT: GOLD OVER NICKEL,
WIRE TRAP: TIN OVER NICKEL.
- 3) APPLICABLE WIRE GAUGE - 18, 20, OR 22 AWG
 - a. SOLID WIRE IS PREFERRED
 - b. PRE-TINNED STRANDED WIRE IS ACCEPTABLE
 - c. 1 cm +2.00/-0.00cm STRIP LENGTH IS RECOMMENDED
- 4) MOUNT HOLDER USING M3 OR 4-40 SCREWS (2),
0.2 NEWTON METER MIN 0.4 NEWTON METER MAX TORQUE.
- 5) UL:OLFB2 UL496 FILE: E345583.

| | | | | | | |
|--|-----------------|--|--------------------------------------|---|--|------------------------|
| ENTER DESCRIPTION EC NO: SSL2017-0012 DRWNLZABJANOVSKI 2016/08/16 CHKD: APPR:GMEYER 2016/09/21 REV B2 | QUALITY SYMBOLS | GENERAL TOLERANCES (UNLESS SPECIFIED) | DIMENSION STYLE MM ONLY | SCALE 2:1 | DESIGN UNITS METRIC | THIRD ANGLE PROJECTION |
| | ▽=0 | mm INCH | DRAWN BY DATE MCOLE 2013/08/21 | TITLE | COB HOLDER ASSEMBLY 19.0MM X 16.0MM ZHAGA STYLE COVER ASSY molex | |
| | ▽=0 | 4 PLACES ± --- ± --- 3 PLACES ± --- ± --- 2 PLACES ± 0.13 ± --- 1 PLACE ± 0.25 ± --- 0 PLACE ± --- ± --- | CHECKED BY DATE GMEYER 2014/05/06 | | | |
| | ▽=0 | ANGULAR ±1/2° | APPROVED BY DATE | MATERIAL NO. 1805800004 | DOCUMENT NO. SD-180580-004 | SHEET NO. 1 OF 4 |
| | | DRAFT WHERE APPLICABLE MUST REMAIN WITHIN DIMENSIONS | SIZE B | THIS DRAWING CONTAINS INFORMATION THAT IS PROPRIETARY TO MOLEX INCORPORATED AND SHOULD NOT BE USED WITHOUT WRITTEN PERMISSION | | |

P/N 180580-0005 HOLDER WITH LENS ATTACH FEATURES



ISO VIEW TOP
SCALE 1:1

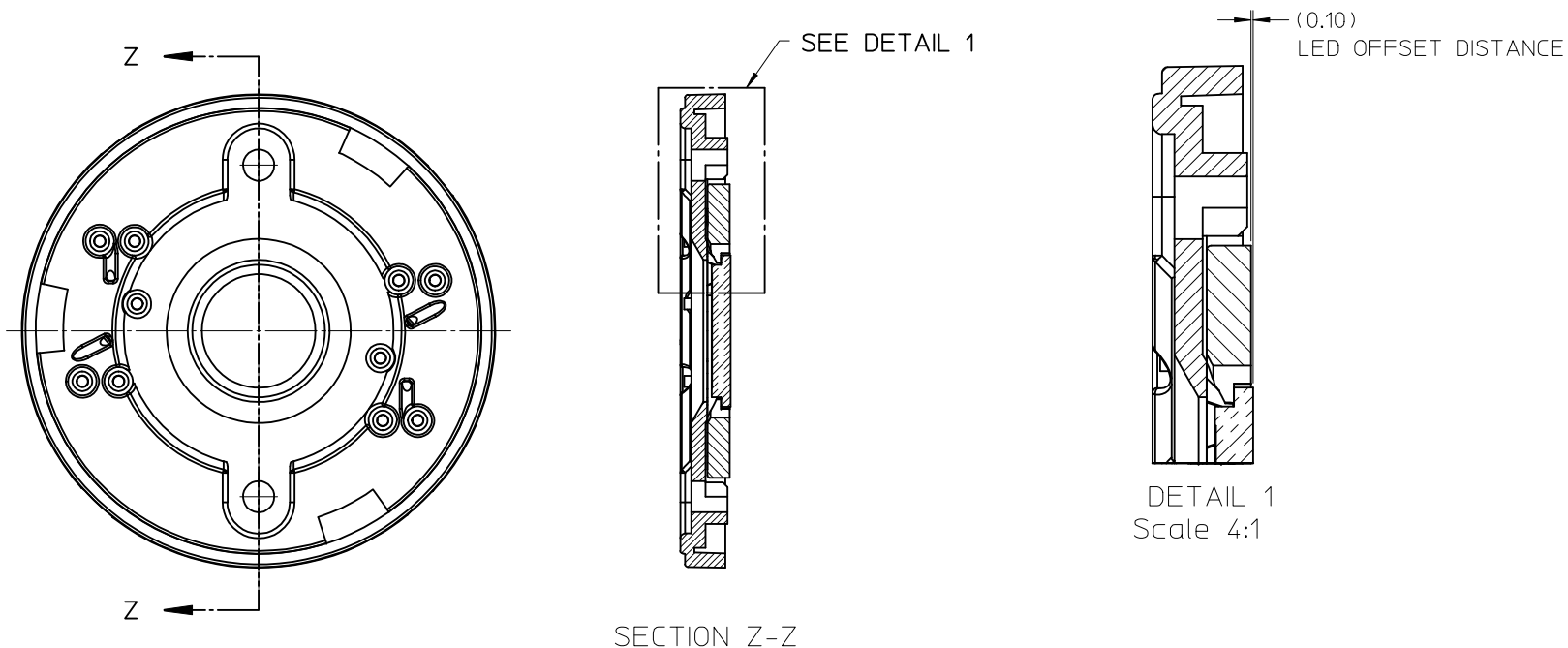


M3 OR 4-40 TAPPED HOLES (2)
TORQUE SCREWS 0.2-0.4 NEWTON METERS MAX.

RECOMMENDED MOUNTING DIMENSIONS (NTS)

| | | | | | | | | |
|--|---|---|------|---|---------------------|--|--------------------------------------|----------------------------|
| ENTER DESCRIPTION EC NO: SSL2017-0012 DRWNL:ZAB.JANOVSKI 2016/08/16 CHKD: APPR:GMEYER 2016/09/21 B2 | QUALITY SYMBOLS ∇/0 ∇/0 ∇/0 | GENERAL TOLERANCES (UNLESS SPECIFIED) | | DIMENSION STYLE MM ONLY | SCALE 2:1 | DESIGN UNITS METRIC | THIRD ANGLE PROJECTION | |
| | | mm | INCH | DRAWN BY MCOLE | DATE 2013/08/21 | TITLE COB HOLDER ASSEMBLY 19.0MM X 16.0MM ZHAGA STYLE COVER ASSY molex | | |
| | | 4 PLACES ± --- ± --- | | CHECKED BY GMEYER | DATE 2014/05/06 | | | |
| | | 3 PLACES ± --- ± --- | | APPROVED BY GMEYER | DATE 2014/05/06 | MATERIAL NO. 1805800005 | DOCUMENT NO. SD-180580-004 | SHEET NO. 2 OF 4 |
| 2 PLACES ± 0.13 ± --- | | ANGULAR ± 1/2° DRAFT WHERE APPLICABLE MUST REMAIN WITHIN DIMENSIONS | | THIS DRAWING CONTAINS INFORMATION THAT IS PROPRIETARY TO MOLEX INCORPORATED AND SHOULD NOT BE USED WITHOUT WRITTEN PERMISSION | | | | |
| 1 PLACE ± 0.25 ± --- | | | | | | | | |
| 0 PLACE ± --- ± --- | | | | | | | | |

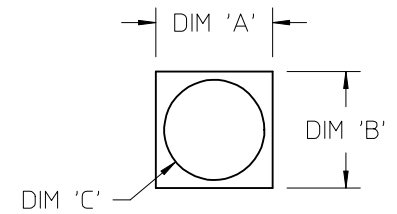
ILLUSTRATION OF HOLDER WITH LED ATTACHED



| ENTER DESCRIPTION EC NO: SSL2017-0012 DRAWN: ZAB.JANOVSKI 2016/08/16 CHKD: APPR: GMEYER 2016/09/21 REV | QUALITY SYMBOLS $\nabla F/0$ $\nabla F/0$ $\nabla F/0$ | GENERAL TOLERANCES (UNLESS SPECIFIED) <table border="1"> <thead> <tr> <th></th> <th>mm</th> <th>INCH</th> </tr> </thead> <tbody> <tr> <td>4 PLACES</td> <td>\pm---</td> <td>\pm---</td> </tr> <tr> <td>3 PLACES</td> <td>\pm---</td> <td>\pm---</td> </tr> <tr> <td>2 PLACES</td> <td>± 0.13</td> <td>\pm---</td> </tr> <tr> <td>1 PLACE</td> <td>± 0.25</td> <td>\pm---</td> </tr> <tr> <td>0 PLACE</td> <td>\pm---</td> <td>\pm---</td> </tr> </tbody> </table> | | mm | INCH | 4 PLACES | \pm --- | \pm --- | 3 PLACES | \pm --- | \pm --- | 2 PLACES | ± 0.13 | \pm --- | 1 PLACE | ± 0.25 | \pm --- | 0 PLACE | \pm --- | \pm --- | DIMENSION STYLE MM ONLY DRAWN BY DATE MCOLE 2013/08/21 CHECKED BY DATE GMEYER 2014/05/06 APPROVED BY DATE | SCALE 2:1 DESIGN UNITS METRIC THIRD ANGLE PROJECTION | TITLE COB HOLDER ASSEMBLY 19.0MM X 16.0MM ZHAGA STYLE COVER ASSY molex | MATERIAL NO. 1805800004 SIZE B | DOCUMENT NO. SD-180580-004 | SHEET NO. 3 OF 4 |
|--|---|--|-----------|----|------|----------|-----------|-----------|----------|-----------|-----------|----------|------------|-----------|---------|------------|-----------|---------|-----------|-----------|--|--|--|---|--------------------------------------|----------------------------|
| | | mm | INCH | | | | | | | | | | | | | | | | | | | | | | | |
| | 4 PLACES | \pm --- | \pm --- | | | | | | | | | | | | | | | | | | | | | | | |
| | 3 PLACES | \pm --- | \pm --- | | | | | | | | | | | | | | | | | | | | | | | |
| 2 PLACES | ± 0.13 | \pm --- | | | | | | | | | | | | | | | | | | | | | | | | |
| 1 PLACE | ± 0.25 | \pm --- | | | | | | | | | | | | | | | | | | | | | | | | |
| 0 PLACE | \pm --- | \pm --- | | | | | | | | | | | | | | | | | | | | | | | | |
| ANGULAR $\pm 1/2^\circ$ DRAFT WHERE APPLICABLE MUST REMAIN WITHIN DIMENSIONS | | THIS DRAWING CONTAINS INFORMATION THAT IS PROPRIETARY TO MOLEX INCORPORATED AND SHOULD NOT BE USED WITHOUT WRITTEN PERMISSION | | | | | | | | | | | | | | | | | | | | | | | | |
| B2 | | | | | | | | | | | | | | | | | | | | | | | | | | |
| | | | | | | | | | | | | | | | | | | | | | | | | | | |

10 9 8 7 6 5 4 3 2 1

| COB MFG. | TYPE | DIM. 'A' | DIM. 'B' | THK. | DIM. 'C' |
|----------|------------------|----------|----------|------|----------|
| NICHIA | NVC*L024* | 19.0 | 16.0 | 1.0 | 13.0 |
| NICHIA | NFC*L036B* | 19.0 | 16.0 | 1.0 | 10.7 |
| NICHIA | NFC*L060B-V* | 19.0 | 16.0 | 1.0 | 13.5 |
| LUMILEDS | LUXEON 1202/1203 | 19.0 | 16.0 | 1.0 | 11.3 |
| SAMSUNG | LC040C | 19.0 | 16.0 | 1.0 | 12.6 |



COB LED
SCALE 1:1

| | | | | | | | | | | |
|---|-----------------|--|--------|-----------------------------------|---|---------------------|--|------------------------|--|--|
| ENTER DESCRIPTION EC NO: SSL2017-0012 DRWNL:ZAB.JANOVSKI 2016/08/16 CHKD: APPR:GMEYER 2016/09/21 | QUALITY SYMBOLS | GENERAL TOLERANCES (UNLESS SPECIFIED) | | DIMENSION STYLE MM ONLY | | SCALE 2:1 | DESIGN UNITS METRIC | THIRD ANGLE PROJECTION | | |
| | ▼=0 ▽=0 | 4 PLACES | mm | INCH | DRAWN BY | DATE | TITLE COB HOLDER ASSEMBLY 19.0MM X 16.0MM ZHAGA STYLE COVER ASSY | | | |
| | | 3 PLACES | ± --- | ± --- | MCOLE | 2013/08/21 | | | | |
| | | 2 PLACES | ± 0.13 | ± --- | CHECKED BY | DATE | MATERIAL NO. 1805800005 DOCUMENT NO. SD-180580-004 SHEET NO. 4 OF 4 | | | |
| | | 1 PLACE | ± 0.25 | ± --- | GMEYER | 2014/05/06 | | | | |
| | | 0 PLACE | ± --- | ± --- | APPROVED BY | DATE | | | | |
| ANGULAR ±1/2° | | DRAFT WHERE APPLICABLE MUST REMAIN WITHIN DIMENSIONS | | SIZE B | THIS DRAWING CONTAINS INFORMATION THAT IS PROPRIETARY TO MOLEX INCORPORATED AND SHOULD NOT BE USED WITHOUT WRITTEN PERMISSION | | | | | |

9 8 7 6 5 4 3 2 1